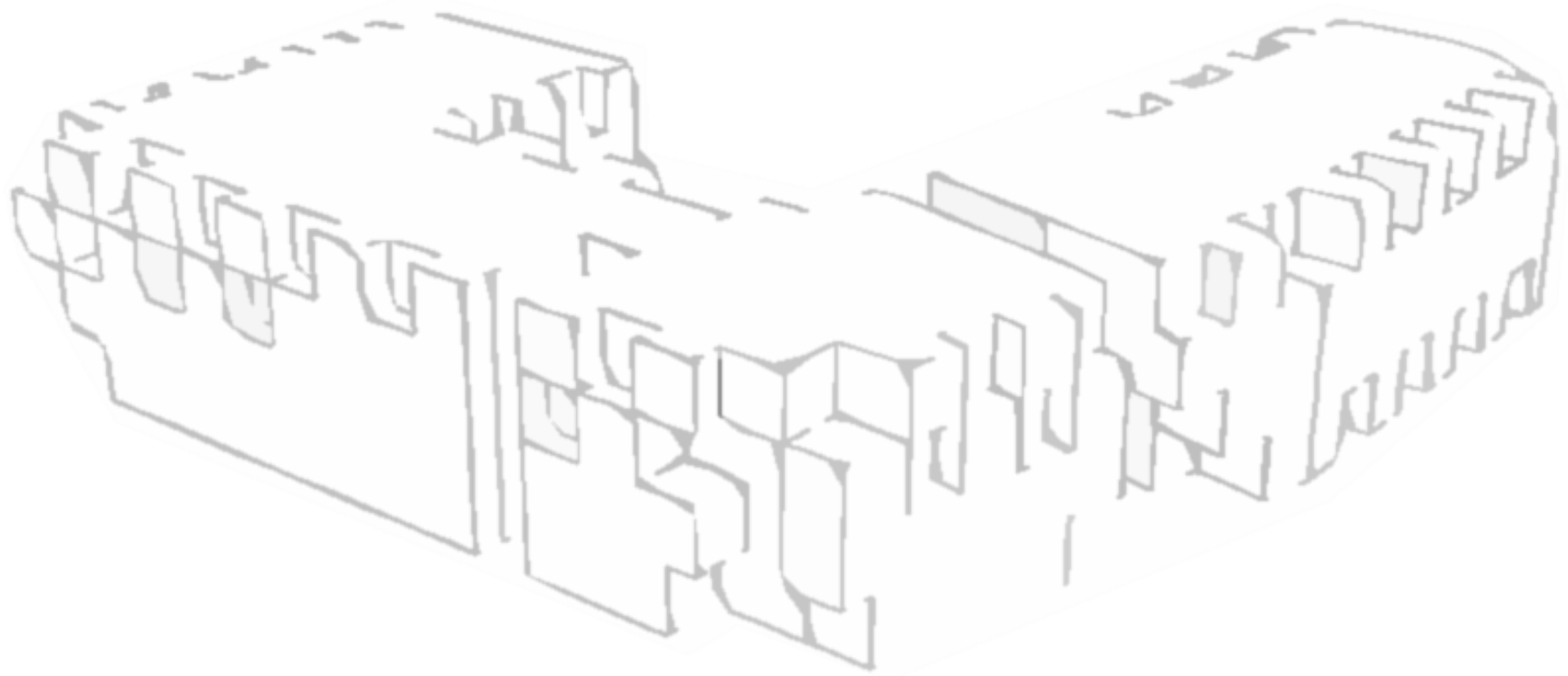
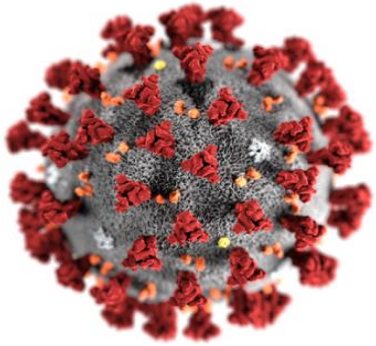


# Quarantine facility with Infill & Cladding System for COVID-19

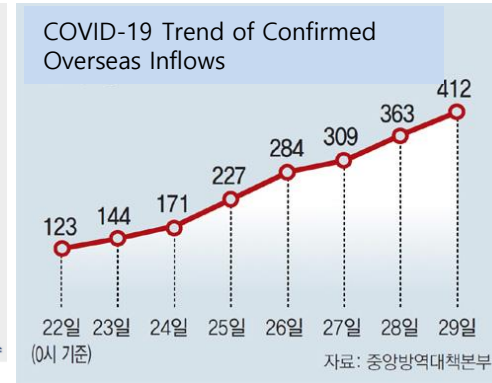
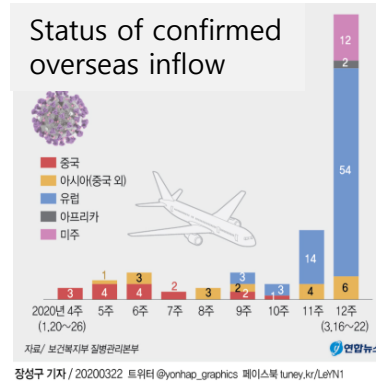


# COVID-19 Pandemics



하루 해외 입국자 1만명, 임시격리시설은 1175명, 대책 마련 시급

10,000 overseas visitors a day, 1175 temporary isolation facilities, and an hourly wage to prepare countermeasures.



# Quarantine facility

‘코로나19’ 팬데믹

인천 인재개발원 등 2곳, ‘입국자 임시 격리시설’로 활용

입력 2020.03.25 (15:46) | 수정 2020.03.25 (16:09)

Use civil servants' training facilities, private company training facilities, hotels, etc. as temporary quarantine facilities for visitors



Regular quarantine facilities are not effective because they are difficult to make good use of in ordinary times.

## Temporary Quarantine facilities



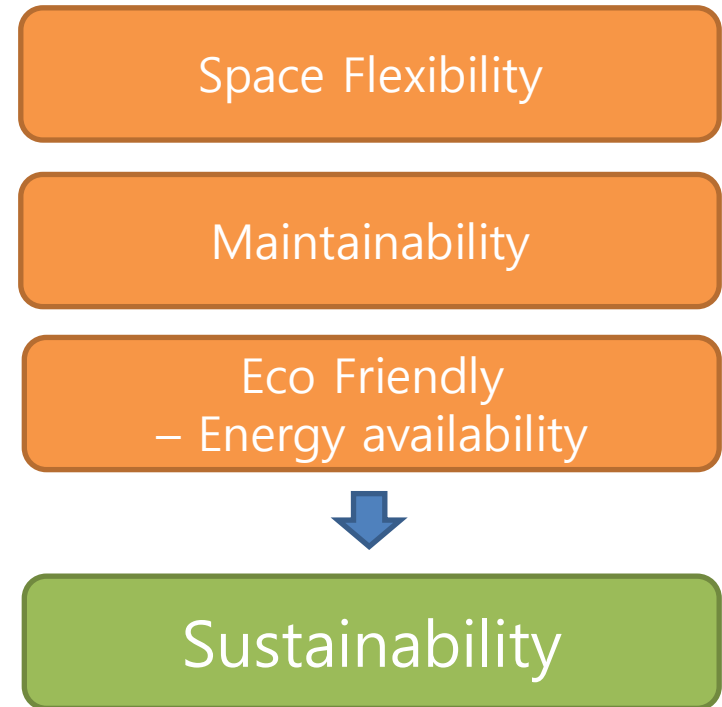
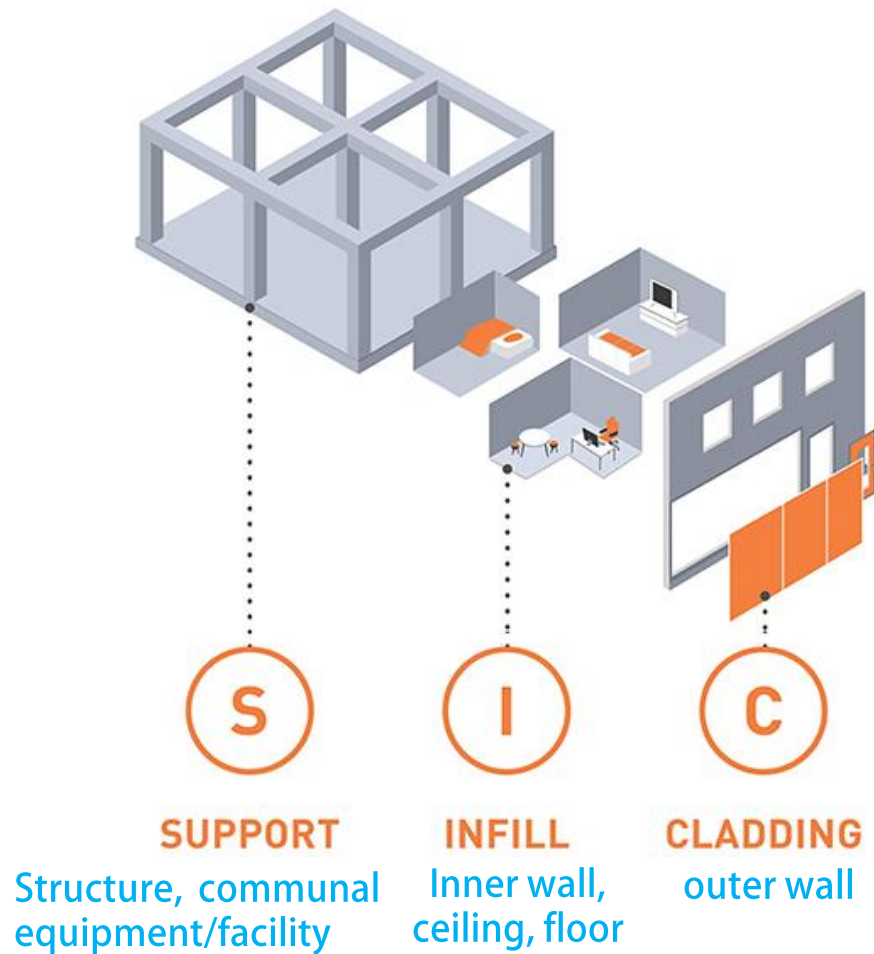
Need to Flexibility



Infill & Cladding System



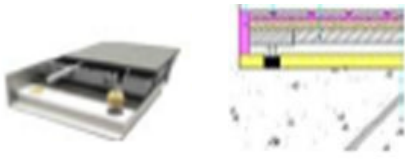
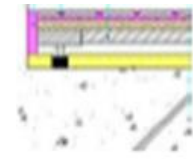


# Infill & Cladding System

Separates the structure from the interior walls, ceilings, and floors to replace components.



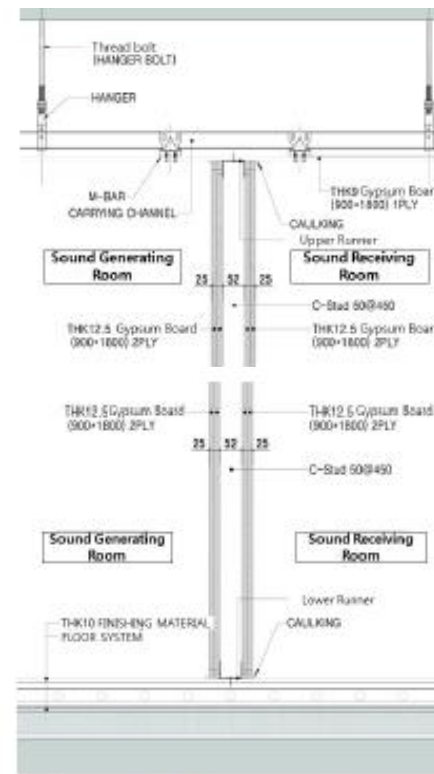
Freely integrating and separating the space through layout changes and replacement. Easily replacing each element to extend the physical and spatial life of the house.

# Infill Component

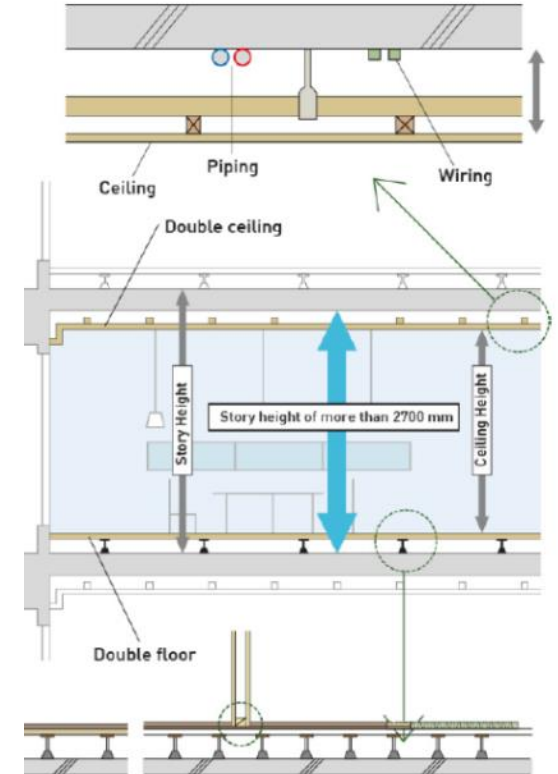
<b>Wall</b>	Construction performance	Dry Wall	Variable Wall
	Variable performance		
	Equipment replacement		
	Load resistance		
	Replacement performance		
Construction performance	Dry Ondol		
<b>Floor</b>	Variable performance		
	Replacement performance		
	Construction performance		
<b>Ceiling</b>	Variable performance		
	Replacement performance		
	Replacement performance		

# Infill Installation

Not directly connected to the structure.

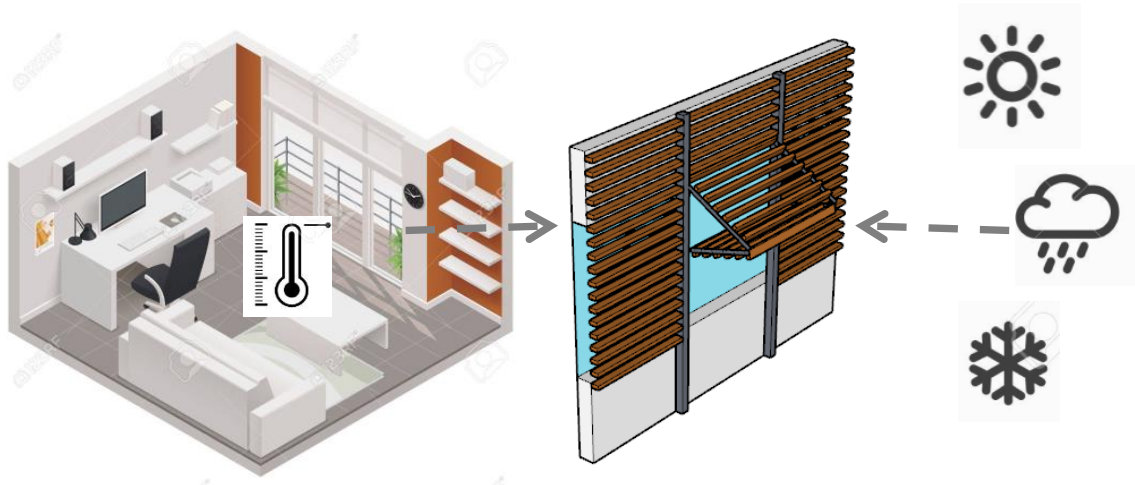


Wall Installation



Ceiling&Floor Installation

# Cladding System



Changes in cladding in response to internal and external environments.

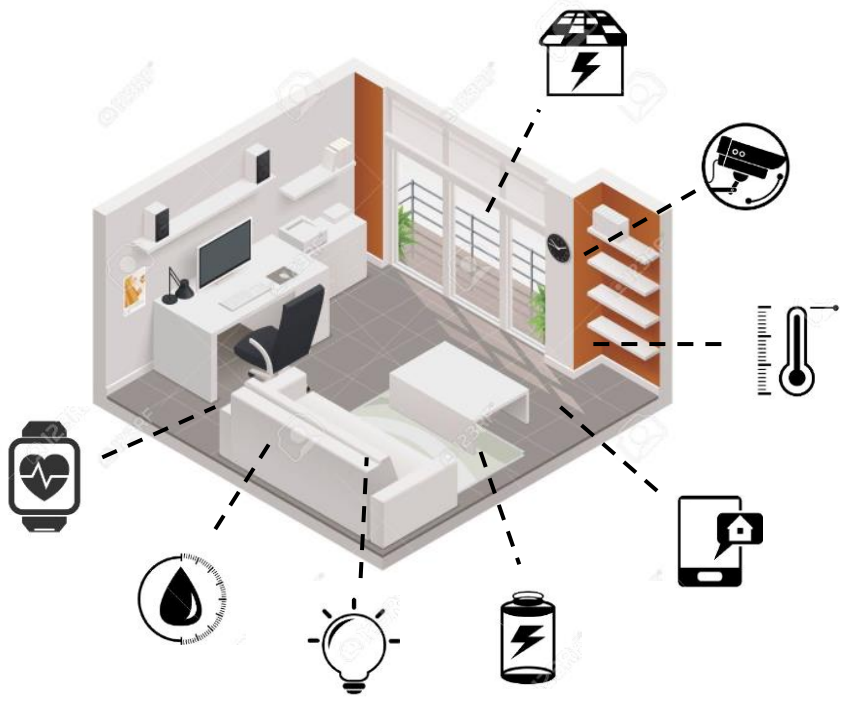
Using variable shading system.



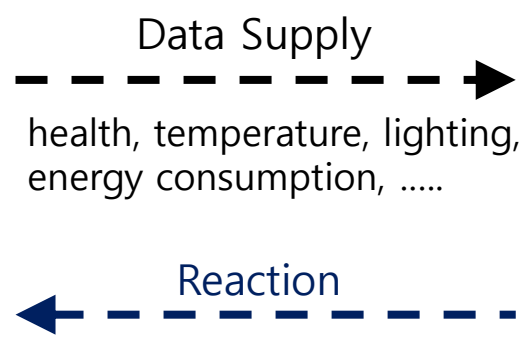
Vertical movable louver

Horizontal movable louver

# Smart System Application



Application of Smart System using IoT in infill system.

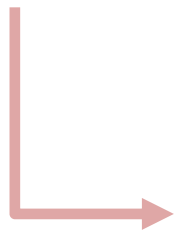
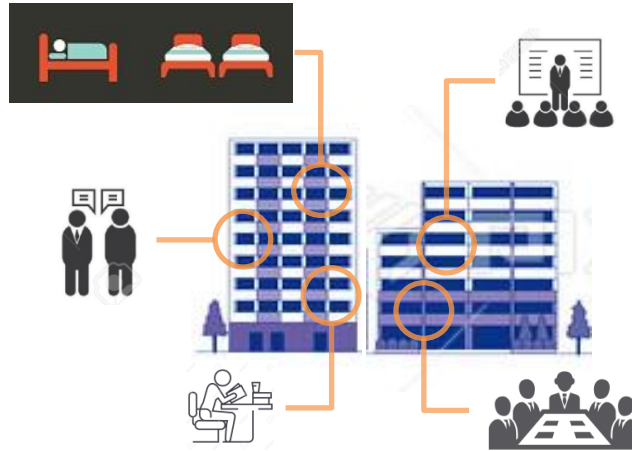


# Moddable Quarantines Facility

Usual



Airport



Pandemic



# Program

Staff's Dormitory  
Inservice Training Facilities

Residence

Lecture Room

Conference Room

Commercial Store

Community Facility

Quarantine Facility

Quarantine Room

NIPR

Test Room

Medi. Team Residence

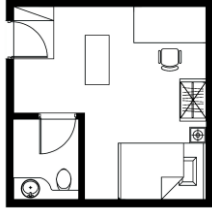
Briefing Room

Service Facility

# Unit Plan

## Usual

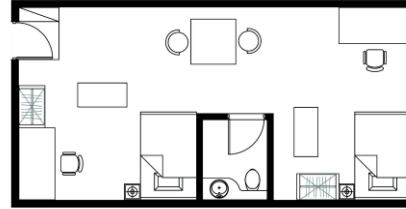
5 X 5



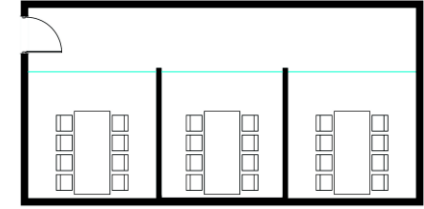
Residence(single)



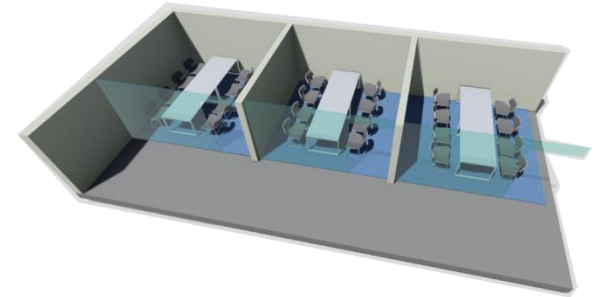
5 X 10



Residence(double)

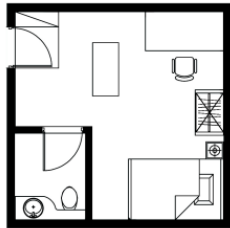


Conference Room

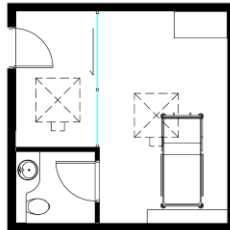


## Pandemic

5 X 5



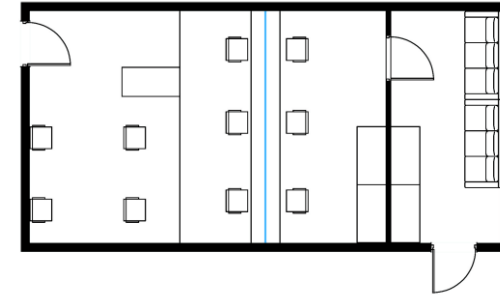
Quarantine Room



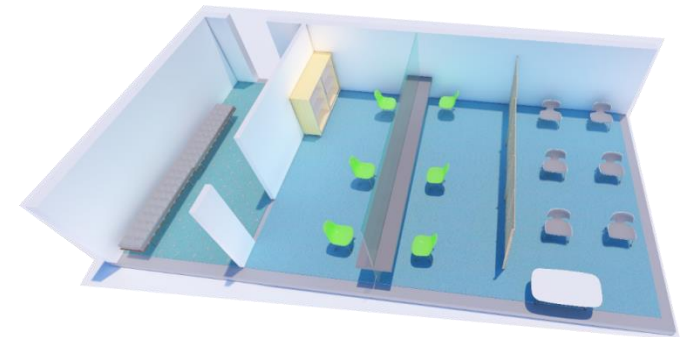
NIPR



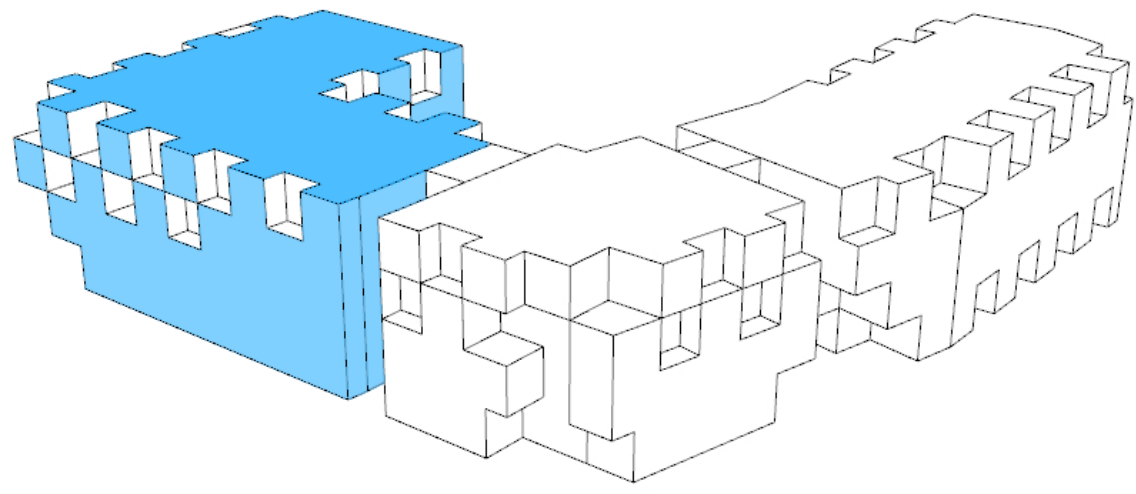
5 X 10



Test Room



# Quarantine Buildings with infill& cladding system



## Quarantine Building

- For Quarantine Objects

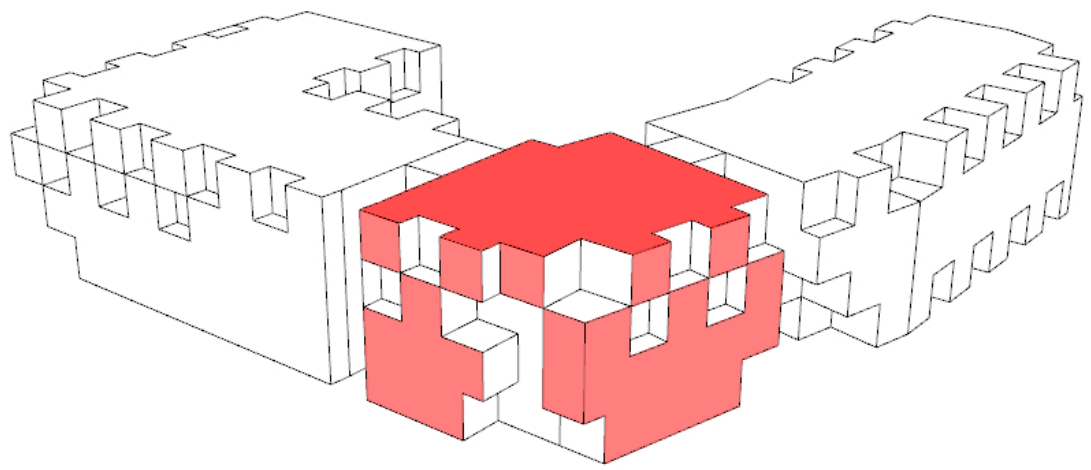
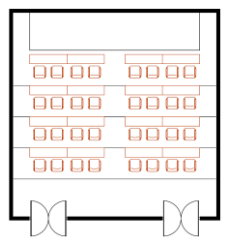
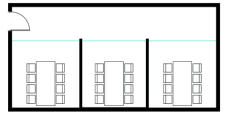
Quarantine Room  
Test Room



## Administration Building

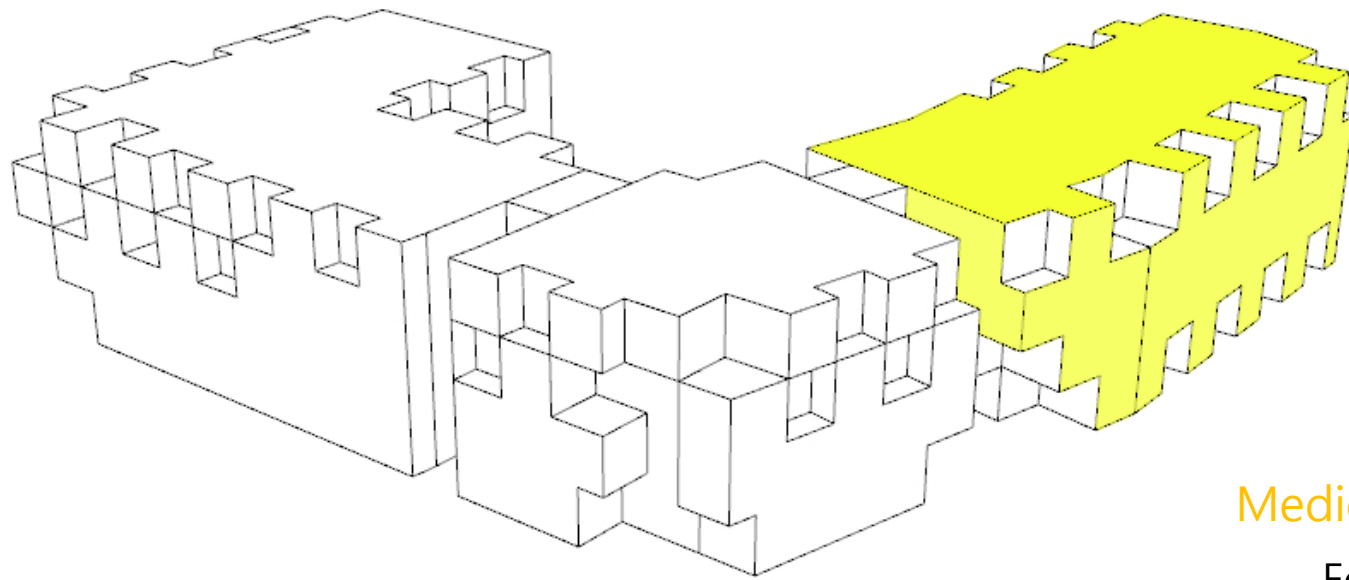
- Maintain Function

Control office  
Monitoring Room  
Service Facility  
Seminar Room





# Quarantine Buildings with infill& cladding system



## Medical Building

- For Medical Team and NIPR



Medical Team Doms  
NIPR  
Briefing Room

